



SHS Pep Band Shirts!

ORDER NOW FOR THE UPCOMING FOOTBALL SEASON

“Sport-Tek” (moisture wicking) royal blue with gold short sleeve polos, embroidered with the SHS band logo on the left front

The SBPA will help your cost by offsetting the price of the first shirt by contributing \$10.00 towards the fee!

Your cost: \$10.00 (\$12.00 for larger sizes)

Complete the information below and mail payment and order form to:

Karen Masucci, 291 Madison Avenue, Spotswood, NJ 08884

Orders are due by FRIDAY, AUGUST 18. Make checks payable to SBPA.

Student Name

Grade

e-Mail Address

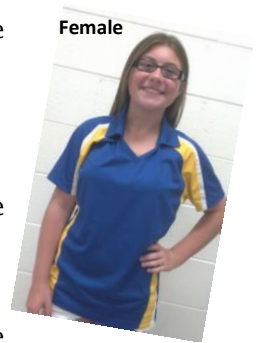
Telephone number

First shirt order (with logo):

Gender:	Male	Female	Quantity:	1			
Adult Shirt size	(\$10.00):	X-Small	Small	Medium	Large	X-Large	
	(\$12.00):	2XL	3XL	4XL			



Male



Female

Additional shirt orders (with logo) can be placed at anytime:

Gender:	Male	Female	Quantity:				
Adult Shirt size	(\$20.00):	X-Small	Small	Medium	Large	X-Large	
	(\$22.00):	2XL	3XL	4XL			

Gender:	Male	Female	Quantity:				
Adult Shirt size	(\$20.00):	X-Small	Small	Medium	Large	X-Large	
	(\$22.00):	2XL	3XL	4XL			

Additional shirt orders (without logo) can be placed at anytime:

Gender:	Male	Female	Quantity:				
Adult Shirt size	(\$18.00):	X-Small	Small	Medium	Large	X-Large	
	(\$20.00):	2XL	3XL	4XL			

Gender:	Male	Female	Quantity:				
Adult Shirt size	(\$18.00):	X-Small	Small	Medium	Large	X-Large	
	(\$20.00):	2XL	3XL	4XL			

Total quantity ordered: _____

Total amount enclosed: _____



Questions? Contact us at SHSBandParentsAssoc@yahoo.com
Order forms are also available at www.spotswoodhsband.weebly.com

